

# procyon R

Psion Revo Astronomy program

---

Last update June 28,2002

[Procyon R, Procyon especially written for the Psion Revo](#)

---

<b>Version</b> <b>1.06</b>	
-------------------------------	--

PROCYON R takes full advantage of the Revo.

- You can identify many object just by pointing at them;
- Much higher precision in [Pro](#) version;
- Faster rebuild of the universe (but we can't take credit for that).
- Advanced features like Moon-zoom.

<b>kProcyon R Light</b>	
-------------------------	--



**697 Kb**

Download the latest version of [Procyon R 1.06](#)

**SIS-package**

Right-Click hyperlink and choose 'Save Link As'

## To Install Procyon R:

• In the System screen of your Revo, tap the top toolbar button ("Control Panel") and check if the "Add/Remove" icon is available. If it is not, copy the following file to your Revo, select it (in the System screen) and press Enter.



**58 Kb**

Download the latest version of [Standard SIS installer](#)

**Executable file**

Right-Click hyperlink and choose 'Save Link As'

This should install the Add/Remove icon to your control panel. For the latest information about SIS files see <http://www.pSION.com>

---



**354 Kb**

Download the latest version of [Procyon R 1.06](#)

**ZIP compressed package**

## To Install:

- Make sure you can see the SYSTEM directory on your Psion 5.
- Go to either C:\System\Apps\ or D:\System\Apps\
- 'Make a new folder' and name it PROCYONR
- Do not change this name or else you will not see the program on the Extra's bar.
- Copy all the Procyon files into this directory.
- When you press the 'Extras' button, a PROCYON R Icon will appear.
- Put RMRAlarm.opx in C:\SYSTEM\OPX.

New Event file for  
2001 !

Download the latest version of [REVENT.DBF](#)  
containing information of a number of major astronomical events in the  
year 2001



16 Kb

**Install REVENT.DBF in the SYSTEM/APPS/PROCYONR directory  
on your Psion Revo**

Procyon R Pro

The Light version of PROCYON R is **free for non-commercial** use and can be considered freeware.

But you can also see this version as a shareware program and once you register you'll have added benefits.

**Detailed list and pictures of [differences between the Light and the Pro version.](#)**

If you have registered Procyon X and received a **Procyonr.Key** file, you'll also need the Auxiliary pack which includes some files only used (and needed) within the Pro version of Procyon X.



708 kB

Download the [Procyon R Auxiliary Pack](#)

**SIS Package** - You can only use this file if you have a valid 'Procyonr.Key' file!  
Right-Click hyperlink and choose 'Save Link As'



313 kB

Download the [Procyon R Auxiliary Pack](#)

**ZIP compressed Package** - You can only use this file if you have a valid 'Procyonr.Key' file!

REGISTRATION

**Procyon R can be registered Online for your convenience at:**

**US\$ 35**

**RegNet** - The Registration Network.

Register Procyon R at

<http://www.swregnet.com/1703p.htm>

or call 1 800 WWW2REG or (805) 288-1827.

**US\$ 30**

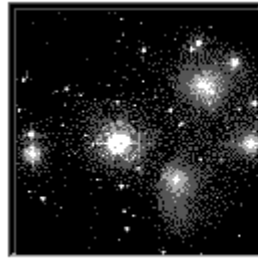
**Click here to REGISTER  
this software ONLINE!  
[www.RegSoft.COM](http://www.RegSoft.COM)**

## PREVIEW

### Procyon R will make full use of the Revo Capabilities

The program can be mixed between the internal disk (C:) and/or on a Compact Flash (D:)

Procyon R Pro uses 1.35 MB of volume space...  
640 Kb without Messier-pictures and NGC database



Initialisation done

## Procyon R Light Version

"Universe in the palm of my hands..."

© 94/00 Pedro van Can and John Sussenbach

Version 0.99

Key / Tap...

27 09 00 UT 15:24 LST 08:32 Utrecht

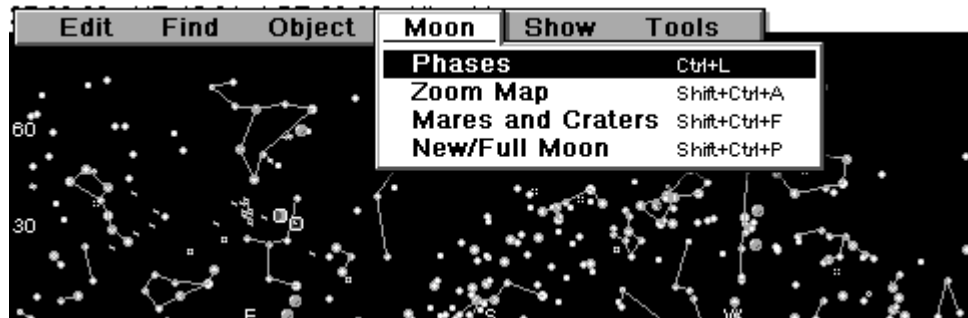


### The Sky

Tailor-made presentations of the Sky can be made by choosing the magnitude of the stars, the constellation lines and names etc.

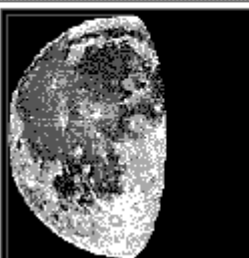
### Menus with detailed information on the Moon

Menu to obtain information on many lunar properties. Allows identification of mares and craters.



19 09

### The Actual Phase of the Moon



Phase	252.33°
Age	20.7 days
k	0.65
Distance	375009 km
Diameter	31'51"
Azimuth	275.50°
Height	37.92°

### The Man in the Moon

You can view the actual phase of the Moon.

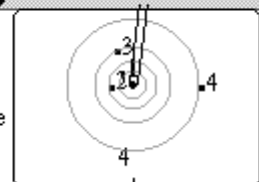
### Jupiter and its Moons

You will always know where the Jovian Moons are located relative to the planet.

### Jupiter and its Moons (Normal view)

19-9-2000 20h37m UT

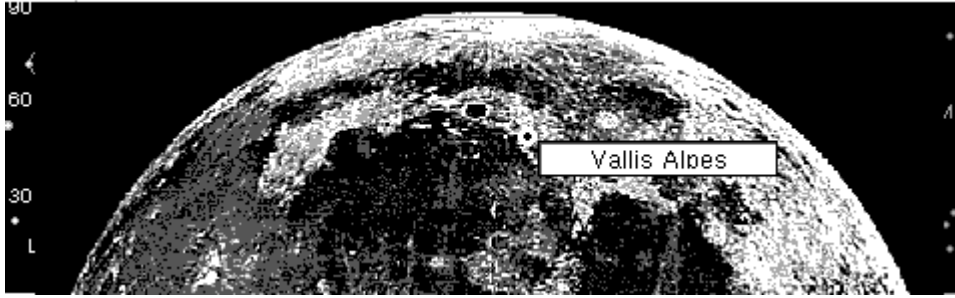
< 1 m/step reverse Home	30 m/step reverse	1. Io
> 1 m/step forward End	30 m/step forward	2. Europa
^ 6 m/step reverse PgUp	3 h/step reverse	3. Ganymede
v 6 m/step forward PgDn	3 h/step forward	4. Callisto



2 3 .

---

19 09 00 UT 20:37 LST 20:53 Utrecht



### The Lunar Map

Identify the major craters and mares, as well as the Apollo landing sites

---

And then we haven't even began talking about: The Lunar Eclipse Viewer, Red Spot Transition Viewer, Binary and Variable Stars, Mars and Saturn View, More, more, more

**Look here for the extra options available only in [Procyon R Pro](#).**

---

[Back to mainpage](#)