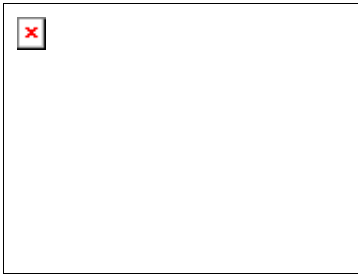


[Introduction](#)

[Download](#)

[Register](#)

[More SW](#)



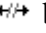

### ***What is DsLink?***

DsLink is a small windows utility that allows EPOC devices ( ie a Series 5 ) running the message suite to connect to the internet via a Windows 95 PC. For example you can use it to log on to your email server (internet) and download your email. Then you can edit during the day on your epoc device and then upload it at the end of the day. Other programs such as newsreaders should also work

### ***How do you use DsLink***

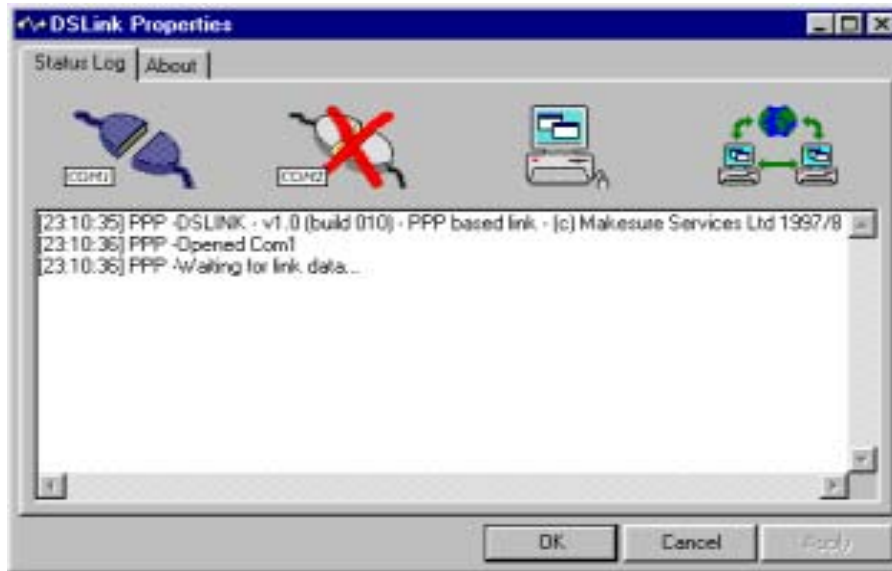
To use DsLink you need to set up the EPOC tcp stack in the control panel on the series 5. More details can be found [here](#). Turn off the link on the series 5 and turn off PsiWin on the pc. Copy DsLink.exe to where you want to run it from(ie C:\Program Files\DLink\DLink.exe) then just run DsLink.exe and thats it.

### ***What does DsLink look like?***

When idle (no connection) DsLink displays a broken link  but when a connection is made from the EPOC device the link icon will wiggle .

If you double click the wigly link then the DsLink window will open, right click the wiggly link to quit DsLink

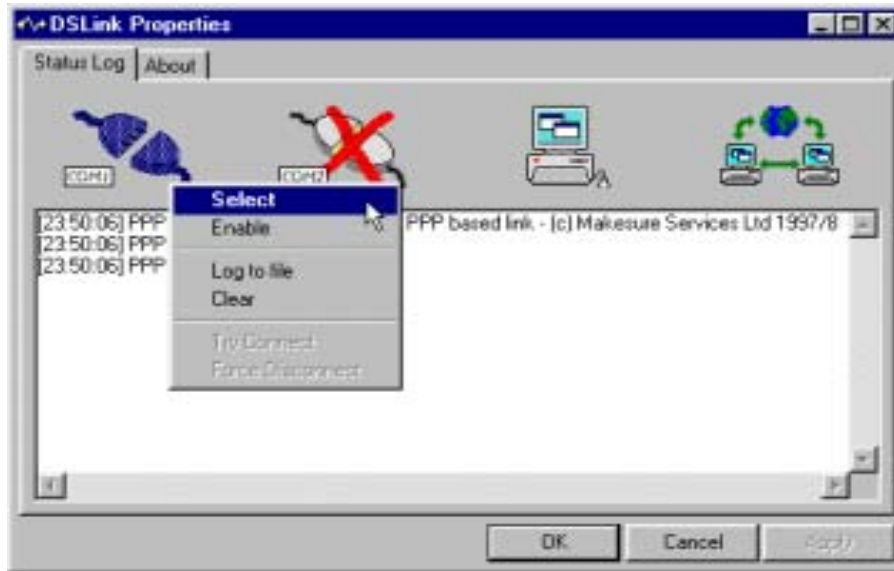
In the example bellow DsLink has detected 2 serial ports (DsLink will support connections on up to 63 serial ports simultaneously). The two pictures to the right of the serial port represent the pc and the internet.



In this example the first serial port (com1) has been enabled but is not connected, the second serial port (com2) has been disabled (this is indicated by a big red cross on top of the port symbol).

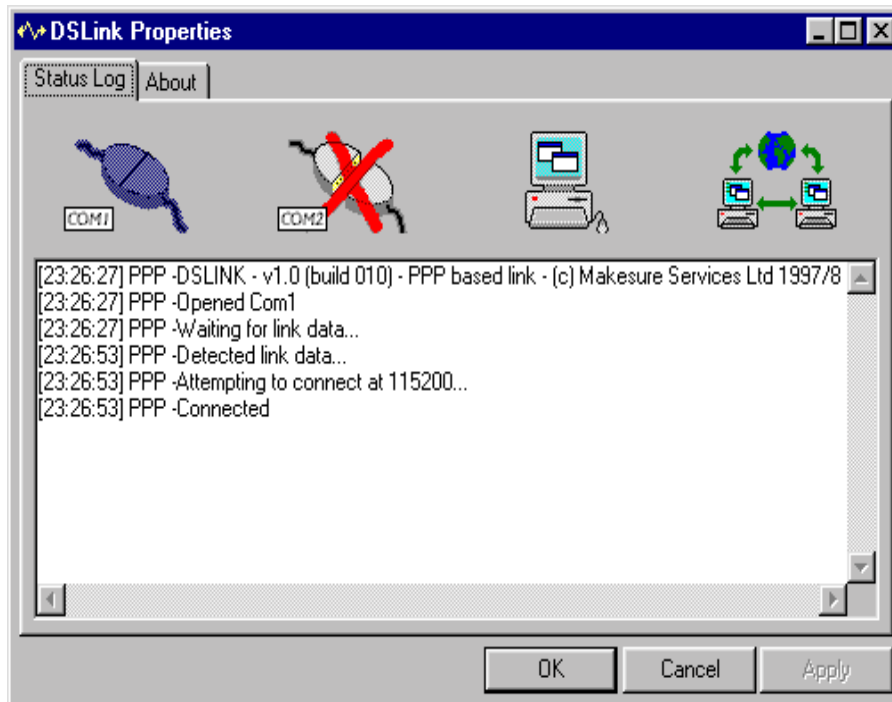
Under the pictures of the serial ports is the log for Com1.

To select the log for Com2, click the symbol for the second serial port. To enable and disable serial ports right click on the symbol for that port and select 'enable'. DsLink cannot enable serial ports that are being used by another program (ie PsiWin) or a modem. Likewise if you wish to use a modem to connect to the internet, then you must disable that serial port in DsLink so that it can be used by the modem.



When data is detected on any enabled serial port, DsLink attempts to autobaud and configure the connection, as it does this it changes the picture of the relevant serial port to show it is connected, and displays progress information in the log window. [More logging information can be turned on in the registry if needed.](#) Once connected outgoing connections to the internet from the epoc device are relayed through DsLink. This allows web browsing and Email sending/receiving while the series 5 is attached to the PC.


By clicking on the picture of the PC or the internet, you can view the diagnostic information for these parts of DsLink. Normally this information is turned off, To view this information you need to turn on the diagnostic output in the registry



### ***Things to remember***

DsLink needs an existing connection ( ie a modem or a LAN ) to connect to the internet, at one level it is only a relay.

Because of the way DsLink is written it is a little bit like a Firewall and so programs that accept incoming connections ( ie FTP apps) may not work. I'am looking at possible solutions to this limitation including SOCKS support ( which would also need to be implemented on the epoc device).

To exit DsLink you need to right click the tray icon  and select close - If you close the dialog box it actually does not close but just hides the dialog and keeps running. - This is intentional.

DsLink will not run at the same time as PsiWin is running - so you may need to close psiwin to get DsLink to run.

Since Dslink normally tries to monitor all serial ports, you may need to disable comports ( as shown above ) if you have modems on those ports. (especially if you want to connect to the internet via dialup networking with it).

### ***History (released versions only)***

Version	Date	Notes

1.00 (010)	1-10-98	(First non beta release) Removed expiry date Improved indicator graphics(incl. scrolling) Internal memory optimizations Split off all Winsock specific code into dll (DsLinkW). Updated help file
0.07 (005)	27-8-98	Added help file ( including trouble shooting and FAQ ), Disabled logging to file by default Removed logging of all raw data transferred (security reasons) Autobauding changed to use speeds specified in the registry.
0.07 (003)	26-8-98	Fixed GPF if com1 is not found
0.07 (002)	23-8-98	Fixed problems with DNS, Added ability to log diagnostics to files Fixed color problem when window colours was not black on white
v0.06 (002)	22-8-98	Extended epiry date to 1st Oct
v0.06	20-8-98	First public beta release
v0.05	2-8-98	First private beta release

### ***Advanced Features/Diagnostics***

If you understand TCP/IP or are interested to see what goes on during a TCP/IP connection you can enable the advanced diagnostics by changing the values in the registry under the key...

```
[HKEY_CURRENT_USER\Software\Makesure\DSLink\Logging]
"DNS -"=dword:00000000
"ICMP-"=dword:00000000
"IP -"=dword:00000000
"IPCP-"=dword:00000000
"LCP -"=dword:00000000
"Ole -"=dword:00000000
"PPP -"=dword:00000001
"PPPERR -"=dword:00000001
"PPPRAW -"=dword:00000001
"SCKT-"=dword:00000000
"TCP -"=dword:00000000
"UDP -"=dword:00000000
"WNSK-"=dword:00000000
```

The value 1 enables logging and 0 disables it. You will need to stop and restart DsLink for the registry changed to take effect, some of the diagnostics appear in the log windows for the individual serial ports while other information is in the logs for the PC (pseudo-sockets internal to the app) and internet (including 127.0.0.1). Just click on a picture like those below to switch between the different logs in DsLink.



DsLink runs a small intranet between the PC and any PPP enabled PDA devices attached to serial ports. This network uses IP addresses of the form 192.168.1.x. If you are actually part of another local network with an address in this range then you need to change the range used by DsLink. There is a registry setting to do this.

```
[HKEY_LOCAL_MACHINE\Software\Makesure\DSLlink\Settings]
"IPBase"="192.168.1.x"
```

### ***Download***

Version 1.00 ( build 010) of DsLink can be downloaded from...

<http://web.archive.org/web/20001012024531/http://www.makesureservices.co.uk/software/dslink/dslink.zip>

### ***Register***

***NOTE DETAILS ARE STILL BEING FINALIZED***

Dslink can be registered for a single user or in blocks of 100 users (actually this is cheaper if more than 10 people are registering)

**Cheque by mail in UK currency Online credit card payment via regnet**

<b>Single user Licence</b>	£10	\$25
<b>100 User Licence</b>	£100	\$250

The postal address for cheques and the RegNet link for online payments will be posted in the next few days

