

Produced by
Psion Computers PLC

Psion Technical Support
Telephone: 0990 143 061
Fax: 0870 1010400

Psion Web Site
www.pSION.com

Psion Faxback Service
0891 515 432

Setting up your Series 5mx, 7 or Revo with Motorola Ir phones

Introduction

This document is designed as a step by step guide to help you connect your Psion Series 5mx, Revo or Series 7 to your Motorola phone for email or web browsing. This document is not designed for anyone with a Psion Series 5, there is a document specifically for Series 5 users.

It is also important for Series 5mx users, but not Series 7 and Revo users, to ensure you have installed the Mobile Connectivity update v1.10 available from <http://www.mobile.pSION.com/> and <http://www.pSION.com/downloads/>

Hardware and Services covered in this document

This document covers the following hardware and services:

Mobile Phones

Motorola Timeport L7089

Psion devices

Psion Series 5mx

Psion Series 7

Psion Revo

Mobile phone services

Data calls for email and web browsing

SMS

NOTE: The Motorola Timeport L7089 does not support fax.

1. Motorola mobile phone setup

1. Check your SIM card is enabled for data – if you are unsure contact your network provider, who will be able to enable your SIM, if necessary.
2. Position both units so that Infrared ports line up at a distance of between 5 to 15cm
3. Activate your mobile phones infrared port (please refer to your mobile phones manual for details on how to activate this port.)
4. For best result your mobile needs to be displaying good signal strength; i.e. 3 to 5 bars on the mobile phones display window. Note this is network dependent on your cellular provider in your coverage area. Failure to have a good signal strength may lead to intermittent dropped calls.

Please Note

A wireless connection is liable to open air effects, which means that any call over GSM will not be as reliable or as fast as a land line to cable modem setup.

2. Psion Series 5mx and Series 7 control panel setup

NOTE: The Psion Revo comes with settings for the Motorola Timeport L7089 built in. To setup your Revo follow the same instructions as below but ignore stage 3. and simply choose the correct option in your modems control panel.

1. Go to the System screen and press CTRL+S (or tap on the Control Panel button on the right hand toolbar) to open your control panel.



2. Tap on the 'Modems' icon **Modems**
3. Tap on the 'New' button and enter the data modem configuration so that it is the same as the listed parameters below. Press CTRL+D (or tap on the 'Done' button) when you have finished creating the new modem configuration

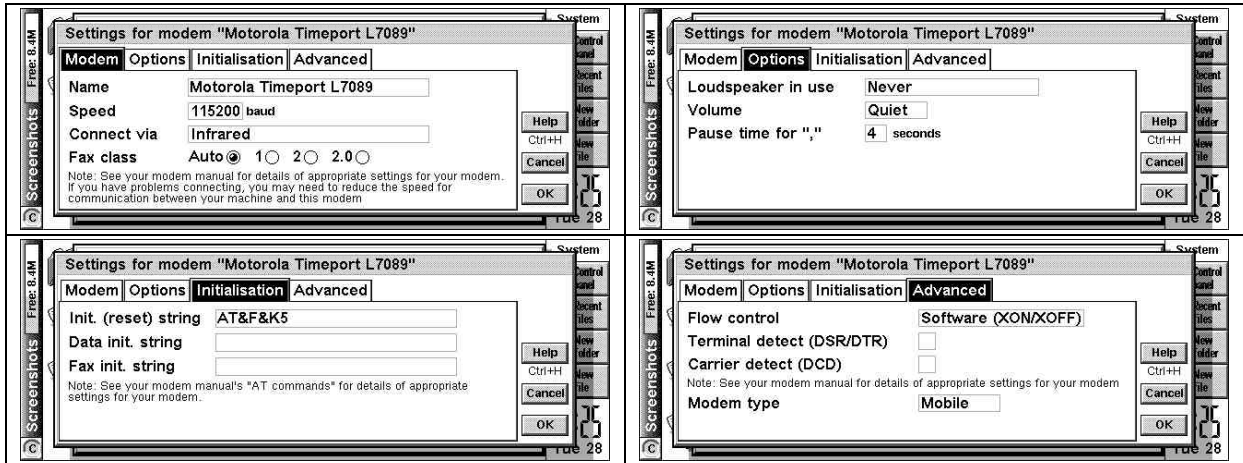


4. Setup your dialling location details by tapping on the 'Dialling' icon **Dialling** and selecting 'Mobile' option in the Location Details tab. Tap on 'OK' to confirm your choice.
5. Follow the message suite instructions for setup of your Internet provider and Email account provider details.

Please Note

- Avoid future login problems by closing down your connection to the email/web post office properly i.e. select the option 'close remote mailbox' or 'disconnect from Internet'.

Modem setup parameters from Series 5mx and Series 7 control panel



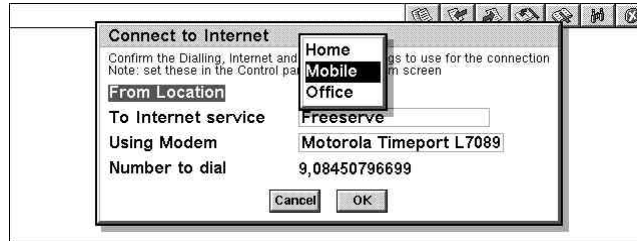
Modem Name	Motorola Timeport L7089
Modem Speed	115200
Connect Via	Infrared
Fax Class	Auto
Loudspeaker in user	Never
Volume	Quiet
Pause time for “,”	4
Init. (reset) string	AT&F&K5
Data init. String	Empty
Fax init. String	Empty
Flow Control	Software (XON/XOFF)
Terminal detect (DSR/DTR)	No tick
Carrier detect (DCD)	No tick
Modem type	Mobile

3. Testing your Internet connection

NOTE: It is best to test your internet connection with just the web browser as it only requires you to ensure one username and password is correct.



1. Start up web by tapping on the Extras icon **Extras** and then tapping on the web icon **Web**
2. To dial out select mobile for location rather than office or home.



3. Ensure you have set the modem setting to “Motorola Timeport L7089”
4. Typical Network login time is 20-30 seconds
5. Typical download time for the Psion mobile phone connectivity home web page (<http://www.mobile.pSION.com/>) is about 2 minutes, this being dependent on having good cellular coverage and high signal level.

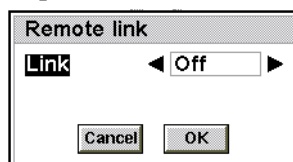
Please Note

- If you receive a dialog that tells you ‘Access Denied’ this is most likely because you have not turned the Remote Link off, or that the Comms application is running. To remedy the solution, check that the Remote Link is off by pressing CTRL+L when on the system screen, and check that the Comms application is not open by holding down the CTRL button and tapping on the system button. This will display the ‘Open files / programs’ dialog which will allow you to close down the Comms application if necessary.

4. Troubleshooting using the Comms app

The following method can be used to check that your Psion Series 5mx or Series 7 can establish a link with the Motorola Timeport L7089 being used. This section is not applicable to the Psion Revo as it does not contain the Comms app.

- Check the Remote link (Link to Desktop on Series 7) is set to 'Off' at the Psion end of the link. Go to the System screen and use CTRL+L (or tap 'Remote Link' in the 'Tools' menu) and check that it is set to 'Off'. Press Enter or tap OK to confirm this setting.



- Check that the Infrared port is activated on the mobile phone



- From the Extras bar **Extras** open the Comms application **Comms**
- On the tool bar tap on the 'setup' button, and choose Infrared under settings. Confirm by tapping on the 'OK' button.
- Press menu and tap on 'tools', then tap on translate codes and check that local echo is not ticked. Confirm by tapping on the 'OK' button
- You should see 'on-line' in the lower left of the screen.
- Type 'ATI' and press return. You should receive a prompt of either "960" when the interface between your Psion and mobile phone is working correctly.
- Press CTRL-E once you have finished testing the link between the mobile phone and your Psion.

5. Known issues

It is possible for the Motorola handset to get into a situation where you can send SMS messages using your Psion device, but not bring messages, that the handset has already received, onto it.

If this occurs it can be easily resolved by turning the handset off and then on again.