

Offline Web

for

Ericsson EPOC Connect

Copyright ©1999 Palmtop Software Ltd.

Made in the European Union.

All trademarks and copyrights are acknowledged.

EPOC and all EPOC-based trade marks and logos are trade marks of Symbian Limited.

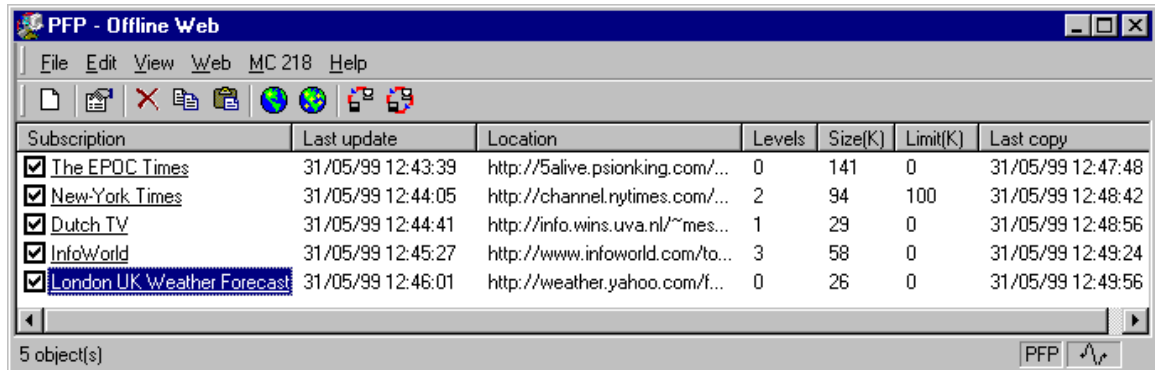
Developed for Ericsson by Palmtop software.

Contents

1. ABOUT OFFLINE WEB	3
2. ABOUT SUBSCRIPTIONS	4
3. SYSTEM REQUIREMENTS.....	5
4. QUICK START IN 10 EASY STEPS.....	6
5. ADDING A SUBSCRIPTION.....	7
7. CHANGING SUBSCRIPTION SETTINGS.....	11
8. DELETING A SUBSCRIPTION.....	12
9. TEMPORARILY DISABLING SUBSCRIPTIONS	13
10. DEFAULT SETTINGS FOR NEW SUBSCRIPTIONS.....	14
11. LIMITING THE SIZE OF THE WEB CONTENT	15
12. OPTIMIZING SUBSCRIPTION SETTINGS.....	16
13. SETTING A SCHEDULE FOR AUTOMATIC WEB RETRIEVAL	17
14. HOW THE WEB CONTENT IS COPIED TO YOUR MC 218.....	18
15. UPDATING SUBSCRIPTIONS MANUALLY	19
16. USING THE PC WEB BROWSER	21
17. USING THE EPOC WEB BROWSER.....	22
18. LOCATION OF WEB CONTENT ON THE MC 218	23
19. MENU COMMANDS	24
20. OPTIMIZING YOUR WEB SITE.....	25

1. About Offline Web

Welcome to Offline Web for Ericsson EPOC Connect – *the* add-on that brings the Internet into your pocket – anywhere, anytime!



Offline Web for EPOC™ enables you to view Web content on your MC 218 without being connected to the Internet. The features of Offline Web allow your PC to check your favourite Web sites for new content and retrieve this content to your PC according to a schedule you specify.

With Offline Web you can create your own Internet newspaper!

Once downloaded to your PC, the Web content can be synchronized automatically to your MC 218, keeping your MC 218 always up-to-date with the latest Web content.

Using the MC 218 Web browser, called Internet, you can browse and view the Web content any time, any place, when you want to, without the need for a connection to the Internet from your MC 218.

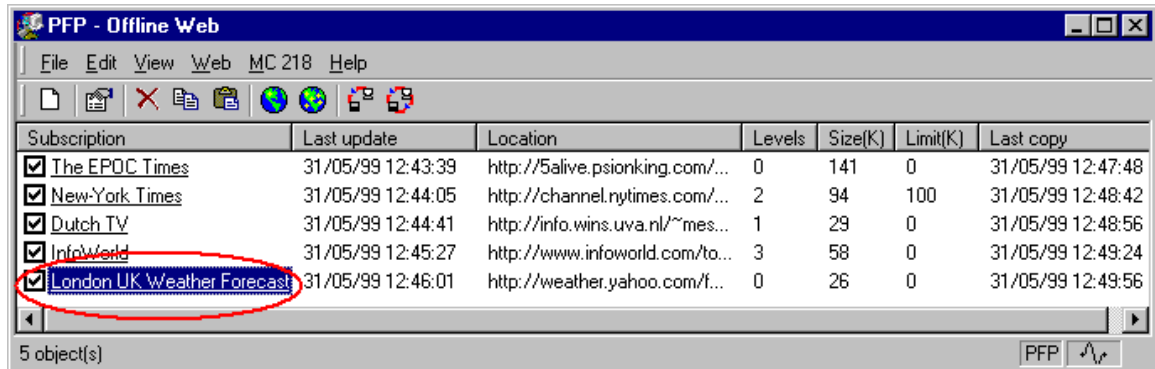
Offline Web uses your PC's standard Internet connection for retrieval.

After installation, you can access Offline Web from "My Ericsson" or from the **Start** menu.

2. About Subscriptions

With Offline Web you add *subscriptions*.

A subscription tells Offline Web which Web sites to monitor and download for offline viewing on your MC 218. It allows you to control how Web content is retrieved, and with which interval the content is updated. An Offline Web subscription does not require you to pay a subscription fee to a Web site owner. And, you can subscribe to any regular Web site.



A Yahoo! subscription for the London weather forecast...

You may add, change and delete subscriptions and control how the Web content is retrieved to your PC.

You can control when and how the subscriptions are updated from the Internet and when they are copied to your MC 218.

From Offline Web you can also manually retrieve Web content and copy the subscriptions to your MC 218.

3. System Requirements

Offline Web requires:

Microsoft **Windows 95** with Microsoft **Internet Explorer 4.0** or better, *or*
Microsoft **Windows NT 4** with Microsoft **Internet Explorer 4.0** or better, *or*
Microsoft **Windows 98**.

A working default **Internet connection** (working with Microsoft Internet Explorer).

For scheduled web retrieval **Task Scheduler** must be installed (part of Internet Explorer 4.0 and Windows 98).

Ericsson EPOC Connect for the connection between your PC and your MC 218.

EPOC Web Browser (called Internet on your MC 218) for offline browsing of your subscriptions.

4. Quick Start in 10 easy steps

1. Check that you have a working connection to the Internet from your PC's Web Browser (see also 3. System Requirements).
2. Install Offline Web.
3. Connect your MC 218 to your PC.
4. Open the *My Ericsson* window from the desktop.
5. Double-click the Offline Web icon.
6. Add a new subscription by choosing **New Subscription** from the **File** menu.
7. Retrieve the Web content by choosing **Update All** from the **Web** menu.
8. Copy the Web content to your MC 218 by choosing **Synchronize All** from the **MC 218** menu.
9. On your MC 218, open the Internet program.
10. Point your browser to c:\Offline Web\start.html.

5. Adding a subscription

You may add a new subscription to a Web site from Offline Web as well as from your PC Web Browser. If the site you wish to subscribe to requires a username and a password, make sure to fill them out correctly.

In Offline Web:

1. On the **File** menu, click **New Subscription**.
2. In the Subscription Wizard, fill out the appropriate settings.

In your PC Web Browser:

1. Open the Web Page you wish to subscribe to.
2. Right-Click pointing at the Web page.
3. Choose **Add to Offline Web** from the context menu.
4. In the Subscription Wizard, fill out the appropriate settings.

Or

1. Open the Web Page you wish to subscribe to.
2. Copy the address from the address selection box.
3. Switch to Offline Web and **Paste** the address from the **Edit** menu.
4. In the Subscription Wizard, fill out the appropriate settings.

Or – if you wish to subscribe to a Web site which supports Offline Web

1. Open the Web Page you wish to subscribe to.
2. Click the subscribe link.

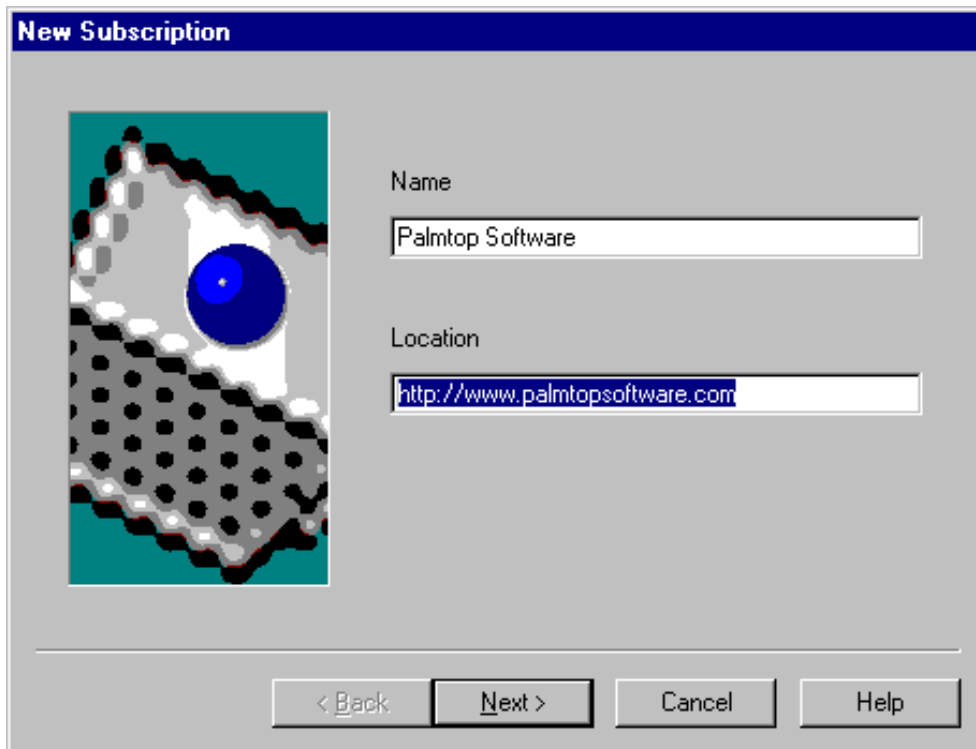
For more details, see chapter 6. The Subscription Wizard.

6. The Subscription Wizard

With the Subscription Wizard, you may fine tune which content is retrieved, and how.

The details for a new subscription need to be entered in three steps.

Step 1 – The initial Web Page



New Subscription

Name
Palmtop Software

Location
<http://www.palmtopsoftware.com>

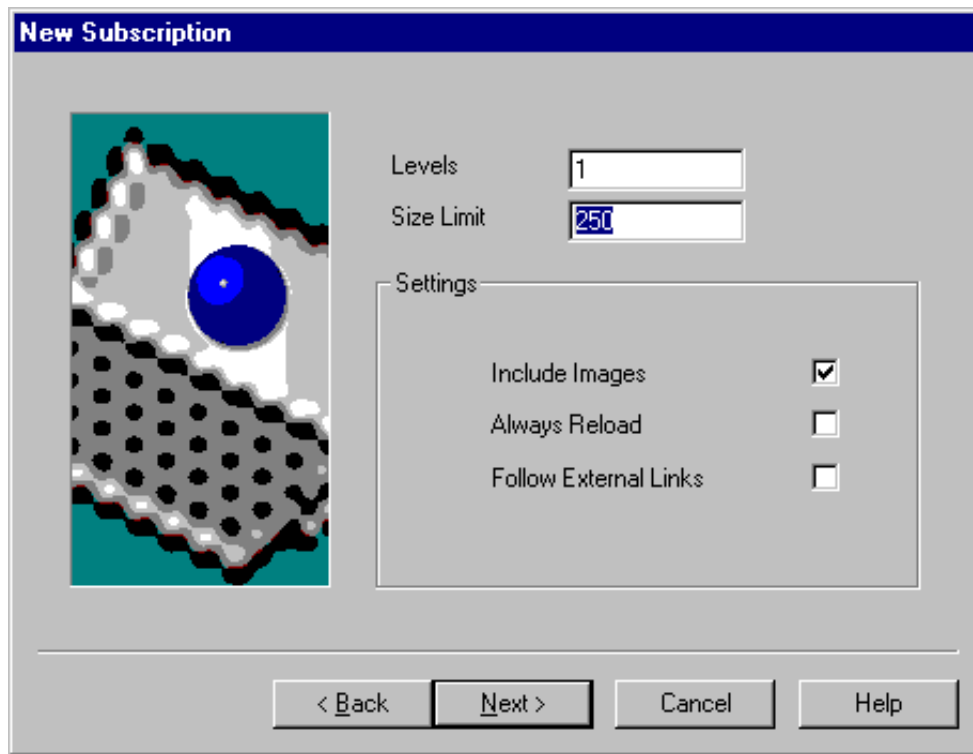
< Back Next > Cancel Help

1. Enter a clear and descriptive name for the subscription.
2. Enter the full URL (web address) for the initial page.

Note: The URL may not contain any spaces.

Note: Offline Web support only http addresses.

Step 2 – Controlling which content to retrieve



New Subscription

Levels: 1

Size Limit: 250

Settings:

- Include Images: ☒
- Always Reload: ☐
- Follow External Links: ☐

< Back Next > Cancel Help

1. Levels

Enter how many levels should be retrieved (0 is only the page that was indicated in the previous step, 1 adds all pages that the initial page refers to, &c.). Retrieving too many levels will severely impact the memory requirements for storage of the Offline Web on the MC 218.

2. Size Limit

Enter at what size you want Offline Web to stop retrieving. See also chapter 11. Limiting the size of the Web content.

3. Include Images

Specify whether you want to include images with the retrieved content. Including images makes the content achieve a greater similarity to PC based browsing, but add in terms of size and download and synchronization times. Many Web graphics are not optimized for handheld device viewing.

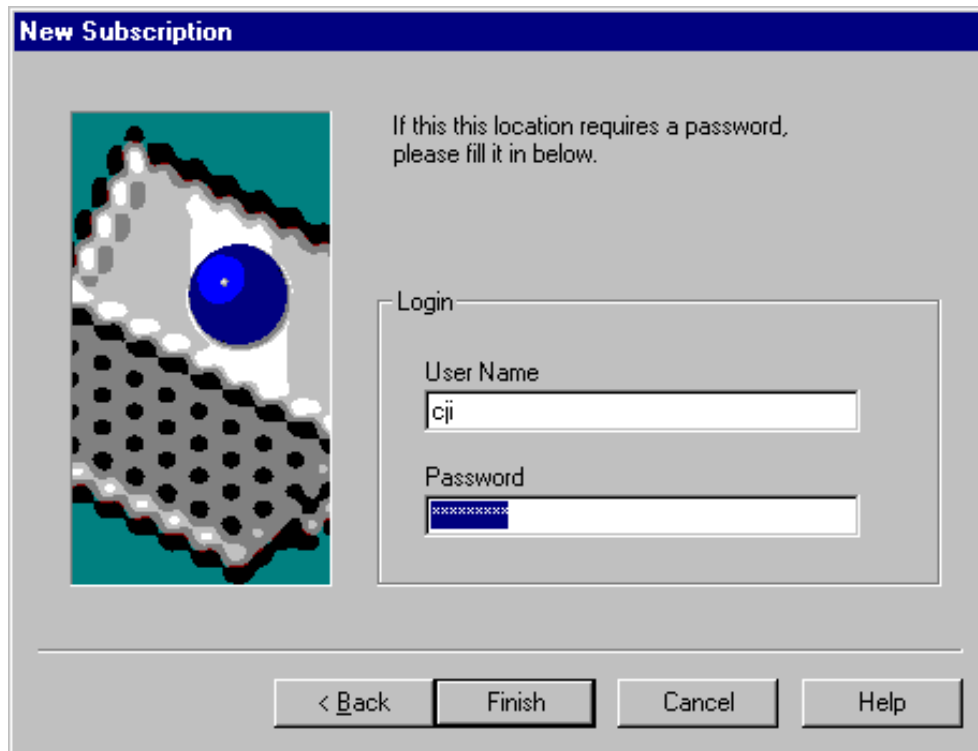
4. Always Reload

To minimize download time, Offline Web will by default only retrieve content if it has changed on the Internet. You may force Offline Web to retrieve the content without taking into account whether the content has changed.

5. Follow External Links

Offline Web will by default not retrieve links from a subscribed page that are not on the same Web site. You may force Offline Web to retrieve these links.

Step 3 – Entering logon details



The image shows a Windows-style dialog box titled "New Subscription". On the left is a pixelated graphic of a landscape with a blue sun. To the right of the graphic is the text: "If this this location requires a password, please fill it in below." Below this text is a "Login" section containing two input fields: "User Name" with the text "cji" and "Password" with masked characters "xxxxxxxx". At the bottom of the dialog are four buttons: "< Back", "Finish", "Cancel", and "Help".

Some Web sites require a User name and a Password. Enter them here.

Press Finish to confirm the subscription settings.

Note: The subscription settings can be changed at any time by accessing the **Properties** through the **File – Properties** menu item.

See also chapter 12. Optimizing Subscription settings.

7. Changing subscription settings

To change the settings for a particular subscription:

1. Open Offline Web.
2. Select the subscription you wish to modify.
3. From the **File** menu, click **Properties**.
4. Change the settings.

For more details, see chapter 6. The Subscription Wizard and 12. Subscription settings.

Optimizing

8. Deleting a subscription

If you wish to end a subscription, you will need to delete the subscription:

1. Open Offline Web.
2. Select the subscription you wish to delete.
3. From the **Edit** menu, click **Delete**.
4. Confirm that you wish to delete the subscription.

The next time you synchronize with your MC 218, the Web content on your MC 218 will be deleted.

Note: If you wish to temporarily disable a subscription, uncheck the checkmark left to the subscription by clicking the checkmark box.

See also chapter 9. Temporarily disabling subscriptions.

9. Temporarily disabling subscriptions

You may choose to not use a subscription temporarily without deleting the subscription. Uncheck the checkbox to the left of the subscription by clicking on the checkbox. If a subscription is not enabled, Offline Web will not retrieve any Web content for that subscription, nor will it copy the content to the MC 218.

You may re-enable the subscription by checking the checkbox.

You may also temporarily disable all subscriptions.

To temporarily disable all subscriptions:

1. Open Offline Web.
2. From the **View** menu, click **Subscription Options**.
3. In the **General** tab, check **Temporarily Disable Offline Web**

To re-enable Offline Web, clear the checkmark.

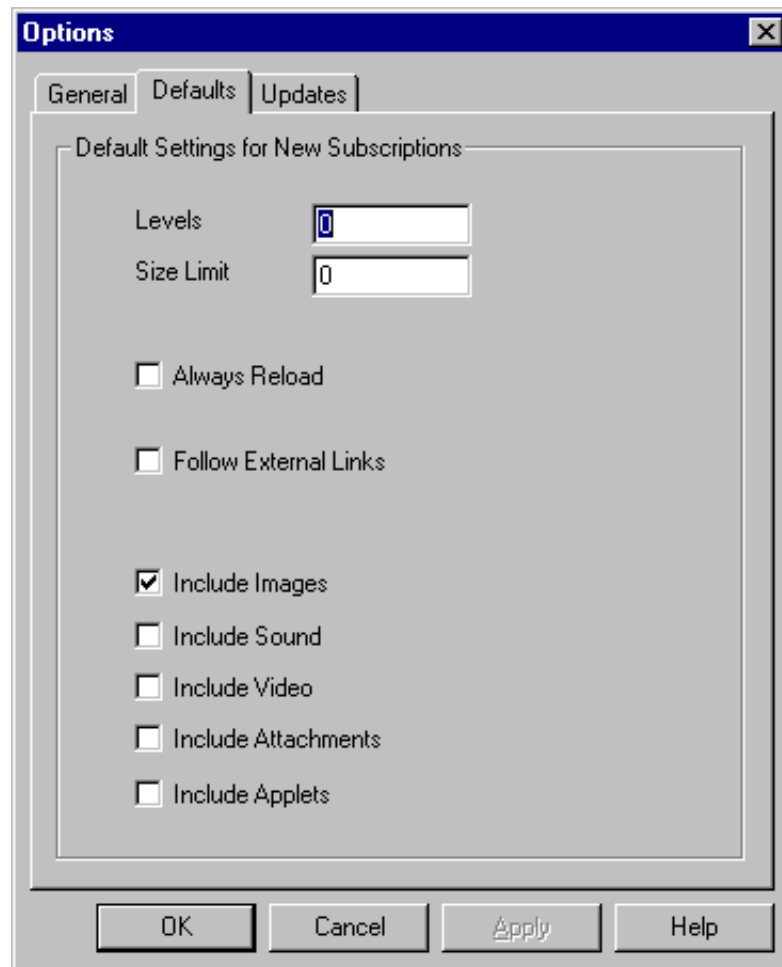
See also chapter 8. Deleting a subscription

10. Default settings for new subscriptions

You may control how subscription settings are initially set when you add a new subscription.

To change the default subscription settings for new subscriptions:

1. Open Offline Web.
2. From the **View** menu, click **Subscription Options**.
3. Enter your default settings in the **Defaults** tab.

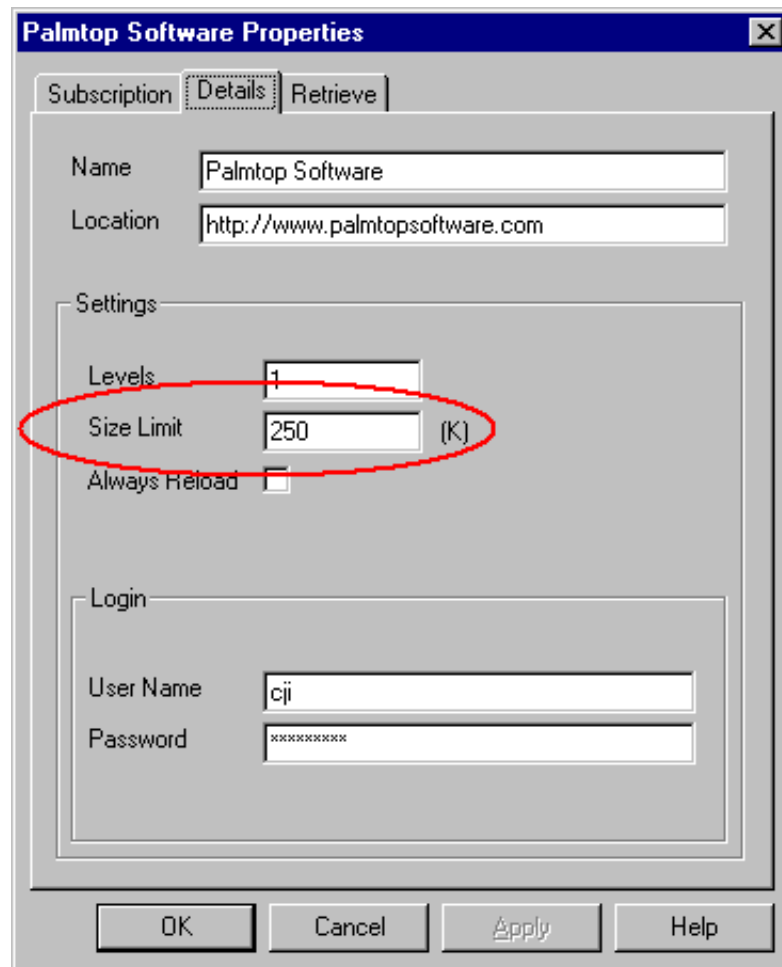


Note: You can modify the settings for a particular subscription any time you add a new subscription, and by adjusting the **Properties** of a subscription.

See also chapter 6. The Subscription Wizard.

11. Limiting the size of the Web content

You may instruct Offline Web to limit the amount of data to retrieve from the Web for a particular subscription. The size limit entered serves as a threshold, and Offline Web may actually retrieve slightly more than the amount that was entered. If a size limit of zero is entered, no size restrictions are imposed.



You may also control whether Offline Web retrieves images and other attachments. This may have a great impact on size and speed of retrieval, browsing and memory usage.

For more details, see 12. Optimizing Subscription settings.

12. Optimizing Subscription settings

Most Web sites on the Internet were created for interactive viewing through an online connection on a PC. Offline Web allows you to view the same content without the need of an online connection at the time of reading. And, Offline Web allows you to read the same content anywhere, on your MC 218.

To get the best offline browsing experience, Offline Web allows you to fine tune exactly how you want Offline Web to retrieve the content to your MC 218.

You can control the retrieval through the settings of each individual subscription, by accessing the **Properties** item through the **File** menu and choosing the Details tab or the Retrieve tab.

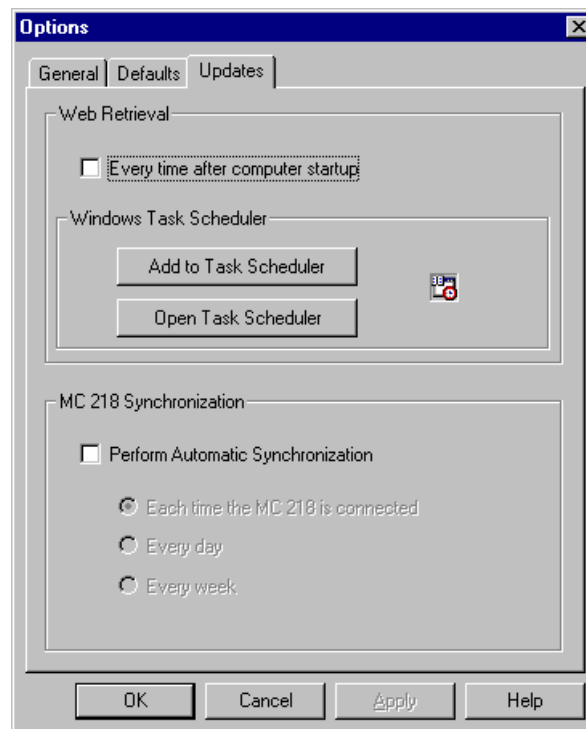
The important factors are:

Levels	Limits how many pages will be retrieved. Level 0 retrieves the first page, level 1 all pages the first page refers to. Level 2 retrieves all pages that all pages at level 1 refer two. Try to keep the level as low as possible to minimize disk space requirements and shorten download times.
Size Limit	Sets a threshold value where Offline Web should stop downloading. If the limit is set to zero, no size restrictions will be imposed. Offline Web will in general retrieve some more content than the size limit, to properly finish off an Internet download.
Reload	If a subscription is set to reload on every Internet connection, the Web content will be reloaded regardless of whether the content did change on the Web. If the Reload item is not checked, Offline Web will only retrieve content if it has changed since the last retrieval.
External Links	Many Web pages contain links to other Web sites. By clearing this item, Offline Web will not retrieve any links that are on a different Web site. Only Web content that is on the same Web site as the first page will be retrieved.
Images	Images are a fundamental part of many Web sites, but may increase the total size of the offline web drastically. If you do include images for offline browsing, try to subscribe to a "low-bandwidth" Web site. Many Web sites provide an entry to the Web site with limited graphics.
Audio, Video	Audio, video, attachments and applets all may lengthen the subscription update time and use large amounts of memory on your MC 218. Your EPOC Web Browser (Internet) may not support these features. In general these options should not be checked. Note that attachments are not converted to EPOC file formats.

Finally, the total number of subscriptions that are enabled contribute to the overall duration of retrieval from the Internet, as well as the amount of memory required on the MC 218.

13. Setting a schedule for automatic Web retrieval

Initially, Offline Web is not set to automatically retrieve Web content. You may set Offline Web to automatically retrieve Web content every time you log on to your PC. If you have “Task Scheduler” installed, you may further fine tune when Offline Web retrieves Web content from the Internet.



To have Offline Web retrieve content every time you log on to your PC:

1. Open Offline Web.
2. From the **View** menu, click **Subscription Options**.
3. In the **Updates** tab, check “**Every time after computer startup**”

To have Task Scheduler control the retrieval:

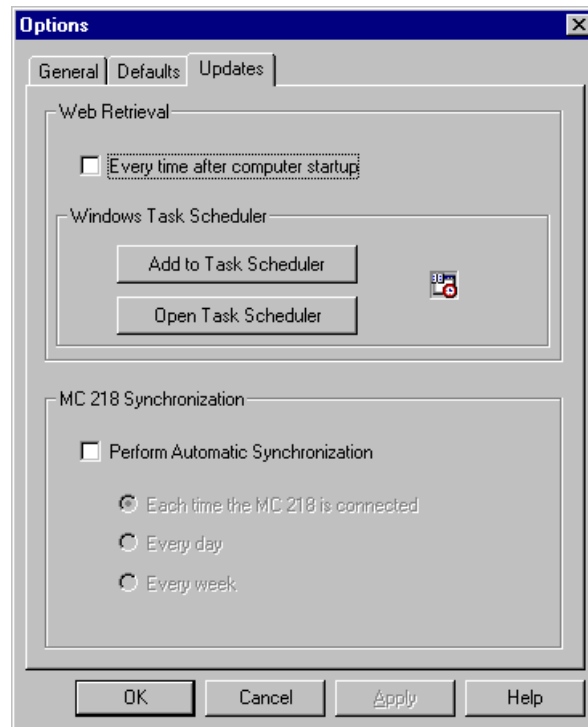
1. Open Offline Web.
2. From the **View** menu, click **Subscription Options**.
3. In the **Updates** tab, push the **Add to Task Scheduler** button.
4. In the Task Scheduler dialog, fine tune the retrieval schedule from the **Schedule** and **Settings** tabs.

Note: If your PC runs windows NT you are required to enter your logon details first (username and password).

Note: If Task Scheduler is not installed on your PC, the **Add to Task Scheduler** and **Open Task Scheduler** buttons can not be selected.

14. How the Web content is copied to your MC 218

Initially Offline Web is not set to automatically copy the Web content to your MC 218. You may have Offline Web automatically copy the Web content to your MC 218 on every connection between your PC and your MC 218, or every day, or every week.



To automatically copy the Web content to your MC 218:

1. Open Offline Web.
2. From the **View** menu, click **Subscription Options**.
3. In the **Updates** tab, check **Perform Automatic Synchronization**, and select a schedule.

15. Updating subscriptions manually

In order for Web site content to become available on your MC 218, you must first retrieve the content from the Internet, and next you must copy the content to your MC 218. Although this can be performed fully automatically – without the need for any explicit interaction on your behalf – you may also control these steps manually.

To retrieve the content for a single subscription from the Internet:

1. Open Offline Web.
2. Select the subscription you wish to retrieve.
3. From the **Web** menu click **Update** to retrieve content only if it has changed, or click **Reload** to retrieve the content anyway.

Note: If the subscription is set to always reload from the Internet, even an **Update** will retrieve the Web content regardless of whether the content has changed since the last retrieval.

Note: If a subscription is not enabled, you cannot retrieve content from the Internet for that subscription.

To retrieve the content for all subscriptions from the Internet:

1. Open Offline Web.
2. From the **Web** menu click **Update All** to retrieve the content for all enabled subscriptions.

Note: For all subscriptions that are set to always reload, **Update All** will retrieve the Web content regardless of whether the content has changed since the last retrieval.

Note: **Update All** will not retrieve Web content for subscriptions that are not enabled.

To update the Web content on your MC 218 for a single subscription:

1. Open Offline Web.
2. Select the subscription you wish to update on your MC 218.
3. From the **MC 218** menu, click **Synchronize**.

Note: If the Web content has not changed since you last updated your MC 218, Offline Web will not copy the contents to your MC 218.

Note: If the selected subscription is not enabled, Offline Web will not update your MC 218.

To update the Web content on your MC 218 for all subscriptions:

1. Open Offline Web.
2. From the **MC 218** menu, click **Synchronize All**.

Note: If the Web content for a particular subscription has not changed since you last updated your MC 218, Offline Web will not copy the contents for that subscription to your MC 218.

Note: If a subscription is not enabled, Offline Web will not update your MC 218 for that subscription.

To overwrite the Web content on your MC 218 for all subscriptions:

1. Open Offline Web.
2. From the **MC 218** menu, click **Overwrite All**.

Note: Even if the Web content for a particular subscription has not changed since you last updated your MC 218, Offline Web will copy the contents for that subscription to your MC 218.

Note: If a subscription is not enabled, Offline Web will not update your MC 218 for that subscription.

16. Using the PC Web Browser

To view the Web content of a subscription online on your PC:

1. Open Offline Web.
2. Select the subscription to the web site you wish to view online.
3. Double-click the subscription, or from the **Web** menu, click **Go Online**.

Note: This feature will set up a connection to the Internet.

17. Using the EPOC Web Browser

Offline Web requires a Web Browser on your MC 218. The Web content that is retrieved through your subscriptions are stored together on your MC 218 as a file-based Web.

You may control where the Web content is stored on your MC 218, see Location of Web content on MC 218.

The “home page” of your Offline Web is start.html, in the Offline Web folder. The default address is C:\Offline Web\start.html.

In your EPOC Web Browser (Internet) you may make this location your default home page – the page that the Web Browser starts up with. This makes access to Offline Web even easier. Please refer to **General Preferences** on the **Tools** menu in your EPOC Web Browser (Internet) for instructions on setting a home page.

Alternatively you may **Bookmark** the Offline Web home page for quick and easy access. Please refer to the **Bookmark** option in your EPOC Web Browser (Internet).

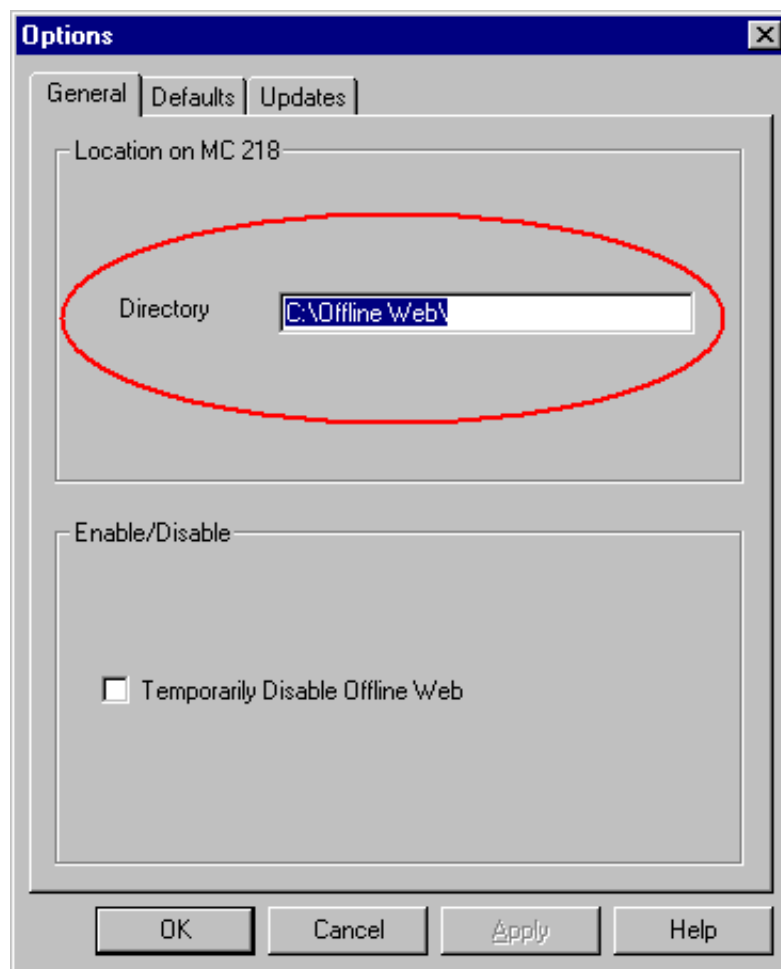
18. Location of Web content on the MC 218

By default, all the retrieved Web content will be placed on your MC 218 in the “C:\Offline Web” folder. You may choose to specify a different folder if you for example have an additional memory card.

To change the location:

1. Open Offline Web.
2. From the **View** menu, click **Subscription Options**.
3. Enter a new location in the **General** tab.

Note: This option does not delete the content in the previous folder on the MC 218.



19. Menu commands

The **File** menu offers the following commands:

New Subscription	Creates a new Offline Web subscription.
Properties	View/Edit the properties of the currently selected Offline Web Subscription.
Exit	Exits Offline Web.

The **Edit** menu offers the following commands:

Copy	Copies the URL of the currently selected subscription to the clipboard.
Paste	Creates a new subscription using the contents of the clipboard for the User.
Delete	Deletes the currently selected Offline Web subscription.

The **View** menu offers the following commands:

Toolbar	Shows or hides the toolbar.
Status Bar	Shows or hides the status bar.
Subscription Options	View/Edit default settings and manage retrieval and synchronization.
Internet Options	Launches the Internet settings panel.
Log (Web retrieval)	Displays status of most recent subscription retrieval from the Internet.
Log (EPOC Synchronization)	Displays status of most recent synchronization with the MC 218.

The **Web** menu offers the following commands:

Reload	Reloads Web content for the selected subscription.
Update	Reloads Web content for the selected subscription, if the content has changed on the Internet.
Update All	Reloads Web content for all subscriptions, if the content has changed on the Internet.
Go Online	Opens the Web page of the selected subscription.

The **MC 218** menu offers the following commands:

Overwrite All	Deletes Web content on the MC 218 and copies most recent content from the PC to the MC 218.
Synchronize	Replaces Web content of the selected subscription on the MC 218, if the content on the PC is more recent.
Synchronize All	Replaces Web content of all selected subscription on the MC 218, if the content on the PC is more recent.

The **Help** menu offers the following commands, which provide you assistance with this application:

Help Topics	Displays help on Offline Web.
About Offline Web	Displays version and copyright information.

20. Optimizing your Web site

This section offers considerations for the fine tuning of a Web site for offline browsing with Offline Web for Ericsson EPOC Connect.

Screen Size	The Web content will be viewed on a “small” screen. Especially the width of the screen puts limitations on paragraph formatting and the use of tables.
Screen Depth	The Web content will highly likely be viewed on a greyscale screen. Background graphics can easily obscure text. Colourful images will lose colour. High contrast images will come out clearly.
Page Payload	The size of a Web page is determined by its text content and its attached images (as well as other attachments). Each of these contribute to the disk space requirements on the target MC 218. The less space, the more attractive for subscription. Limit the number of graphics and the colour depth of graphics. Also, limit the number of levels of retrieval.
Hyperlinks	The retrieved content will be viewed whilst there is no connection to the Internet. Any link to a Web address that is not present as an offline page will be handled appropriately by Offline Web, but may prove of negative value to the reader. Hyperlinks should point into the offline web itself, providing a “selfcontained” offline Web. The Offline Web retriever on the PC only supports the http:// protocol (and e.g. not file:// and ftp://).
Quick Navigation	By providing menu or index style hyperlinks in a “selfcontained” offline Web (at the top and/or bottom of every page), the user can more easily navigate through the content, without needing to use the BACK button in a repetitive manner.
Timestamping	Offline Web will only retrieve a Web page if it has changed (unless the Reload option is checked). By properly timestamping Web pages, the overall retrieval time will be minimized.
URL consistency	A subscription will be set up once and then forgotten. If the URL the subscription targets changes, the subscription will fail. So, as an example, for a daily news item, rather use “today.html” than “news990624.html” (depicting the news of June 24 th , 1999).
Frames	Frames may be rendered very differently on the MC 218 and lead to unexpected results. Also, frames take longer to show on the screen. Frames should be handled with extreme care.

Forms Since the Web content will be viewed in an offline state (typically), form submissions do not make sense in many situations. Any submit buttons will result in the Web Browser on the MC 218 trying to initiate an Internet connection (which can be useful for certain “registration” type of applications).

Easy subscription Explain which Offline Web settings to use to create an ideal subscription for the Web site. Alternatively use the subscribeto: protocol.

subscribeto: By adding an HREF to an HTML page, a simple point-and-click will allow the Offline Web user to correctly subscribe to a Web site. The subscribeto scheme works similar to any HREF (such as http:// or ftp://) but instead of taking a URL, it takes a set of parameters describing the subscription settings. For details, see below. The subscribeto protocol works only with Microsoft Internet Explorer 4.0 or better.

The subscribeto: scheme

Example:

```
<a
href="subscribeto:[name=Palmtop_News][url=http://www.palmtop.nl/news.html][levels=0][images=yes][reload=yes]">Palmtop News</a>
```

This HREF tag adds a hyperlink to an HTML page. If the user of the PC Web Browser clicks “Palmtop News”, a subscription for “Palmtop News” at http://www.palmtop.nl/news.html will be added to Offline Web without the need for further user interaction, and with all settings at their right values.

Each setting is described by a name-value pair within square brackets. Space characters between the double quotes are not allowed and should be replaced with underscore characters. The setting “names” are case insensitive – i.e. [name= denotes the same as [Name=.

The following settings are supported:

Name	Name of the subscription. Replace space characters with underscore characters.
Url	URL of the first (“front”) page of the subscription.
Levels	Depth of retrieval. Values from 0 and up.
Maxsize	Threshold value at which download should stop. If omitted, value is set to 0 (no threshold). A fine tuned web site should not require this setting.
External	Value of yes/no. Specifies whether external links should be retrieved. If omitted, value is set to no.
Reload	Value of yes/no. Specifies whether the subscription should be reloaded every time, or only if the first (“front”) page has changed. If omitted, value is set to no.
Images	Value of yes/no. Specifies whether images should be retrieved. If omitted, value is set to no. Similarly the names Audio, Video, Documents and Java are supported.